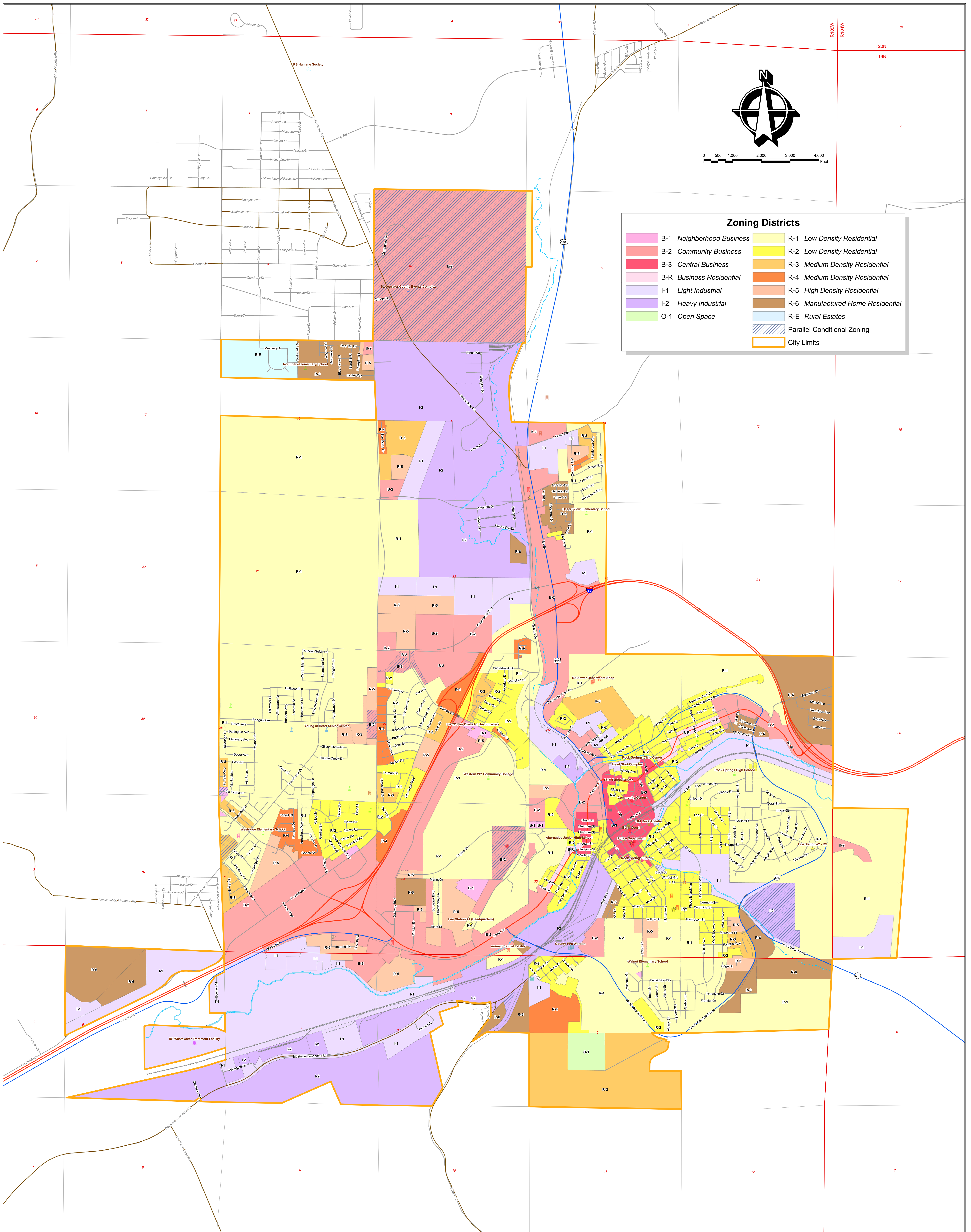


City of Rock Springs

Official Zoning Map



Zoning Districts			
	B-1 Neighborhood Business		R-1 Low Density Residential
	B-2 Community Business		R-2 Low Density Residential
	B-3 Central Business		R-3 Medium Density Residential
	B-R Business Residential		R-4 Medium Density Residential
	I-1 Light Industrial		R-5 High Density Residential
	I-2 Heavy Industrial		R-6 Manufactured Home Residential
	O-1 Open Space		R-E Rural Estates
			Parallel Conditional Zoning
			City Limits